

Master Clinical Neuropsychology

September, 2020



Universiteit
Leiden
The Netherlands

Discover the world at Leiden University

Content

1. General information master program
2. Thesis
3. Internship & BAPD

Online Q&A session for Thesis and Internship:

10 September 2020

Content

1. General information master program
2. Thesis
3. Internship & BAPD

Clinical Neuropsychology at Leiden University

Knowledge and skills to prepare you for a professional career in:

clinical setting

research/innovation

Assessment, treatment, guidance of brain damaged patients

Staff

Reflects the aims of the master program:

Clinical experts

Researchers, working on specific functional domains
and innovation in healthcare

Part of the Medical, Health and Neuropsychology Unit

Content

Clinical expertise

Knowledge

Skills

→ Post-graduate health care training

Research expertise

Scientist-practitioner

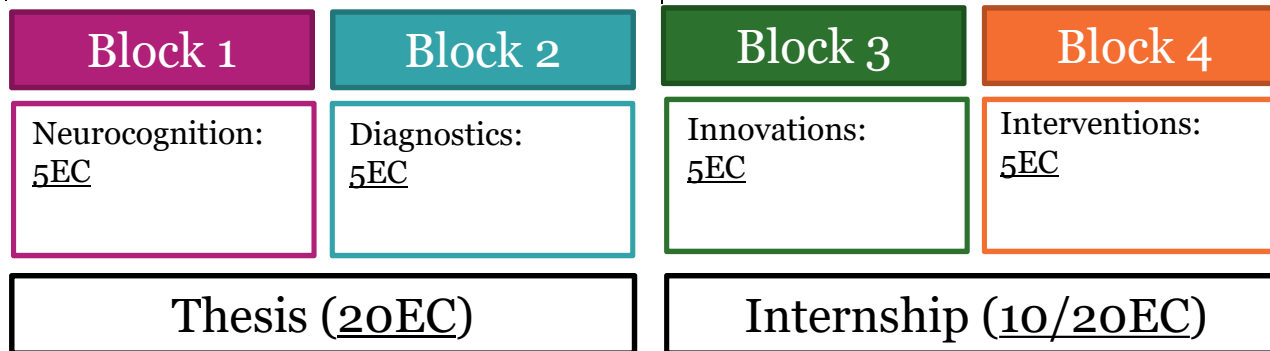
→ PhD training

Ready for the future of clinical neuropsychology

Program (60 ECTS)

September '20

February '21



Electives in CNP

Coordinators

There are several coordinators for different aspects of the program:

- Course coordinators
- Mentor
- Thesis coordinators
- Internship coordinator
- BAPD coordinator

Course coordinators

- Practical questions pertaining to the course, like scheduling, absence, exams, resits, etc.
- Questions on content

Neurocognition

Marit Ruitenbergh & Judith Schomaker

Coordinators:



Diagnostics in CNP

Dominique vd Heuvel & Michiel Claessen

Coordinators:



Innovations in CNP

Ineke vd Ham & Rebecca Schaefer

Coordinators:



Intervention strategies in CNP

Aglaia Zedlitz & Dominique vd Heuvel

Coordinators:



Methods in CNP

Coordinators:



Ilse Schuitema & Rebecca Schaefer

Child CNP

Coordinators:



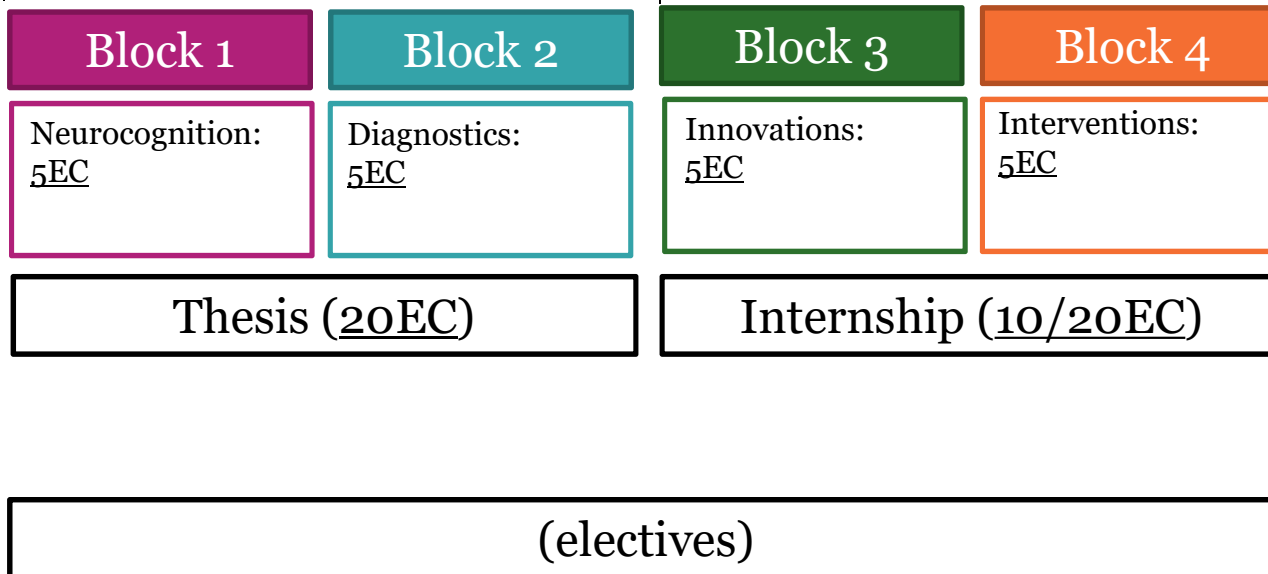
Janice Sandjojo & Monique Morcus

In case of any difficulties regarding
your educational or cultural background or
other limitations,
please convey your needs to us.

Program (60 ECTS)

September '20

February '21



Mandatory courses

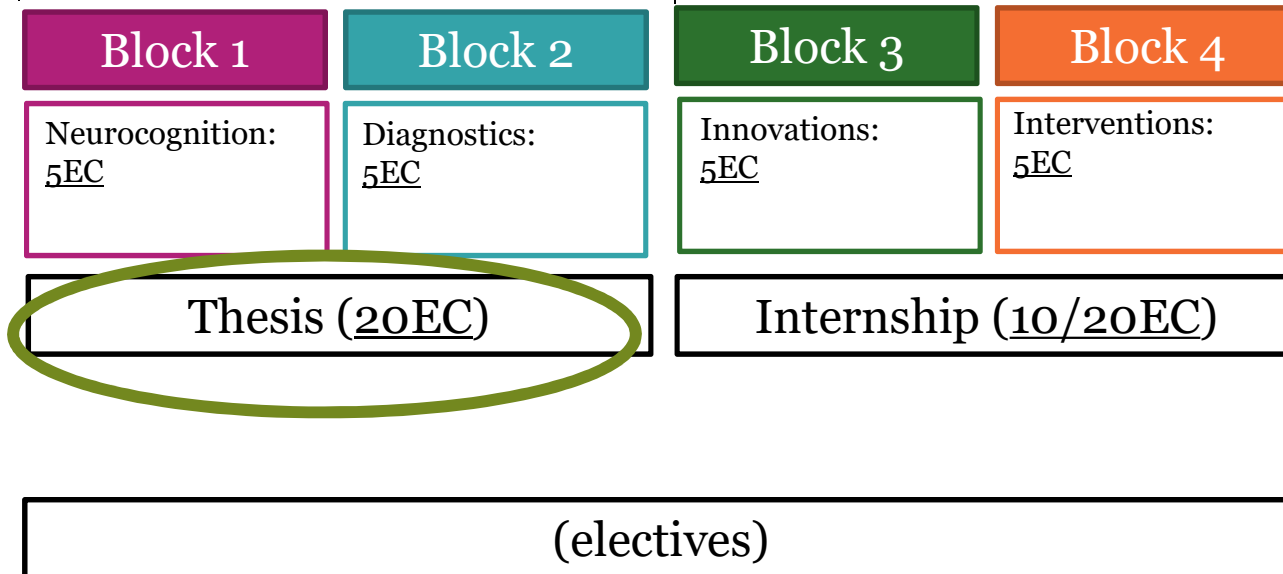
Content

1. General information master program
2. Thesis
3. Internship & BAPD

Program (60 ECTS)

September '20

February '21



Mandatory courses

Coordinators

- **Thesis Coordinators:**

- Questions concerning finding a thesis project
- Approval of project/subject (mandatory)
- Issues with your supervisor(s)



Esther Habers & Marit Ruitenberg

Marit Ruitenberg & Esther Habers

ThesisCoordinatorNeuro@fsw.leidenuniv.nl

THESIS (20 ECTS)

Learning objectives

- [1] Students can communicate the core of their own research in writing to colleagues and to the general public.
- [2] Students can integrate and discuss literature resulting from a literature search in a state-of-the-art overview in an overarching / transcending manner.
- [3] Students can formulate a clear research question which is based on previous literature and psychological theory.
- [4] Students can substantiate the relevance of the research question.
- [5] Students can report the methods used clearly and completely so that replication is possible.
- [6] Students can adequately report the results of statistical analyses.
- [7] Students are able to interpret the results in a correct and nuanced manner, both theoretically and methodologically (within the framework of the applied research paradigm)
- [8] Students show a good understanding of the strengths and limitations of the applied research paradigm.
- [9] Students are able to describe the implications of their research.
- [10] Students can write scientifically: i.e. clear, concise, readable, with good structure.
- [11] Students can properly organize their thesis and format it according to APA rules.
- [12] Students show an adequate work attitude during all phases of their thesis project.

THESIS

Tasks:

- study the literature
- develop a research question and research design (*proposal*)
- analyze the **data** →
- write a *thesis*

Data options:

Data collection
(optional)

External people sometimes call this a '*research internship*'.

Existing database

Existing database

+
Data collection for another project

Meta-analysis

THESIS

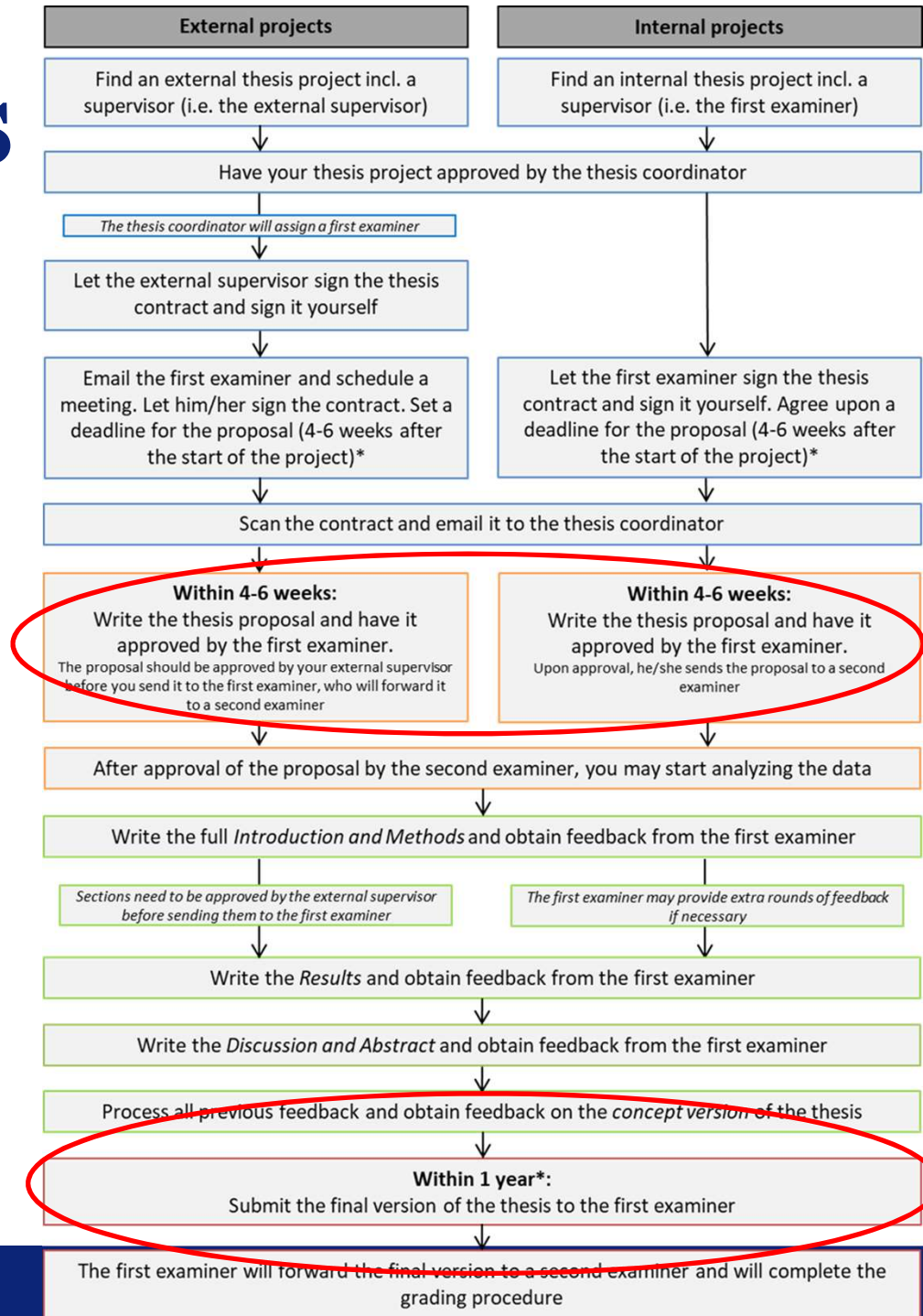
You can write your thesis within a project of researchers from the Health, Medical and Neuropsychology Unit (i.e. **internal project**) or within a project of researcher outside this unit (i.e. **external project**).

In both cases, you will get a supervisor from the Health, Medical and Neuropsychology Unit; this is the first examiner and this person gives feedback on the proposal, introduction, methods, results, discussion, abstracts, and concept version of the thesis. Furthermore, you will get a second examiner. Together with the first examiner this person is involved in proposal approval and grading of the final version of the thesis.

If you do an external thesis project, you also have an external supervisor who is your daily supervisor. This supervisor is also involved in approving the proposal and gives some advice for the final grading.

THESIS

- Timeline



THESIS – Topic / Supervisor

You have to find a position yourself.

Please, ask yourself the question in which field you would like to do research for your thesis (e.g. are you specifically interested in a specific disorder?)

Where to look for positions?

- **Blackboard** (6464CN-PSY-0000FSW) (until 1 September 2020), thereafter **Brightspace**.

THESIS – Topic / Supervisor

Where to look for positions?

- You can also look at webpages of specific research groups and institutes:



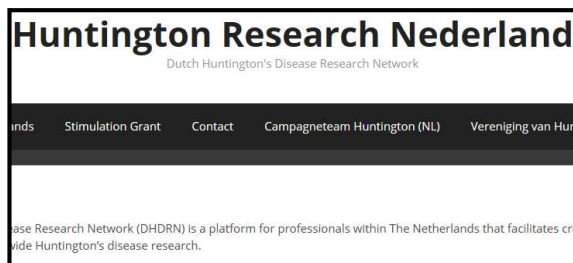
The iBerry Study website features a green header with navigation links: HOME, ONDERZOEK, OUDERS, JONGEREN, and OV. Below the header, there is a search bar and a large heading "Onderzoek". A prominent graphic shows a magnifying glass over a document with the text "Wat is de iBerry Study?".



The website for Academische Werkplaats bij De Nieuwe Kans Rotterdam has a red header with navigation links: Organisatie, Medewerkers, H.E.T. Onderzoek, Publicaties, Samenwerking, Stages, and Blog. The main content area is divided into three columns: "Hersenonderzoek", "Effectonderzoek", and "Vacatures". Each column contains a brief description of the research and a "Lees verder" link.




The Alzheimercentrum zuidwest Nederland website has a dark blue header with navigation links: ONDERZOEKERS, ONDERZOEKEN, and INSTITUTEN. The main content area features a large heading "Alzheimercentrum zuidwest Nederland" and a paragraph describing the center's expertise in dementia research and diagnosis. Logos for Havenziekenhuis and Erasmus MC are visible.



The Huntington Research Nederland website has a black header with the text "Huntington Research Nederland" and "Dutch Huntington's Disease Research Network". Below the header, there is a navigation menu with links: inds, Stimulation Grant, Contact, Campagneteam Huntington (NL), and Vereniging van Hun.



The article "Groot Europees onderzoek naar ADHD" features a photograph of a person holding a sign that says "ADHD". The text below the photo states: "Zevenien onderzoeksinstituten in acht Europese landen beginnen binnenkort een groot onderzoek naar de hersenstoornis ADHD. Het Universitair Medisch Centrum Groningen (UMCG) coördineert een belangrijk deel van deze studie. „Vroeger dachten mensen dat het bij volwassenen niet voorkwam”." Social media icons for Facebook, Twitter, and Email are shown at the bottom, along with a "0 Reacties" button.



The PubMed search results page shows a search query: "[("Cognition"[Mesh]) AND "Parkinson Disease"[Mesh]]". The search results are displayed in a list format, with the first result being: "Loss of phosphodiesterase 4 in Parkinson disease: Relevance to cognitive deficits." The second result is: "Changes in resting-state directed connectivity in cortico-subcortical networks correlate with cognitive function in Parkinson's disease."

THESIS – Topic approval

(also see the thesis manual)

1) the research topic is sufficiently relevant to the field of clinical neuropsychology (see manual);

2) the daily supervisor has sufficient experience with research; and

3) the intended sample size and sample type are appropriate to test the proposed hypotheses and the data are already available, or it is ensured that the data will be available within a reasonable time frame.

THESIS – Proposal (1)

- Download the **format** from Blackboard.
- Please adhere to the maximum word counts.
- Deadline is set within 4-6 weeks after the start of your project.

THESIS – Proposal (2)

- Front page with tentative title, name, student number, etc.
- Introduction
 - Scientific background (max. 300 words)
 - Research objective(s) & Implications (max. 300 words)
 - Hypothesis/hypotheses (max. 200 words)
- Methods (max. 1000 words)
 - Design
 - Ethics
 - Participants
 - Measures
 - Procedure
 - Statistical analyses
- References
- Time planning (continue next slide)

THESIS – Proposal (3)

Time planning: please indicate dates when you will be submitting to your first examiner...

- Introduction & Methods
- Results
- Discussion & Abstracts
- Concept version
- Final version

Please allow 2-3 weeks of reviewing time and make sure the feedback provided by your external supervisor is already incorporated when you submit your work to the first examiner.

THESIS – Proposal (4)

The proposal will be approved if ...

- 1) the research objectives and hypotheses have a solid foundation in the literature and are argued sufficiently;
- 2) there is good consistency between the research objectives, hypotheses, and proposed statistical analyses; and
- 3) the research project provides the right data and right amount of data to test the proposed hypotheses.

An approved thesis proposal is a requirement to be allowed to proceed with data analysis.

The proposal needs to be approved by the external supervisor (if applicable), the first examiner, and the second examiner.

The research project needs to be approved by an ethical committee.

THESIS – Master Thesis Lab

- See <http://www.socialsciences.leiden.edu//graduateschool/mtl/>
- A quiet workplace with 22 computers (6Co2)
- Statistical consultation (appointment, mail scriptieatelier@fsw.leidenuniv.nl)
- Library advice (appointment)
- Language advice (appointment)

THESIS – Laerd statistics

- Statistics website (partly free) <https://statistics.laerd.com/>
- Test selection
- Elaborate tutorials (paid subscription)
- See Blackboard course Master Clinical Neuropsychology 6464CN-PSY
→ Thesis → Thesis Support (for link and *discount codes*), after 1 September: see Brightspace.

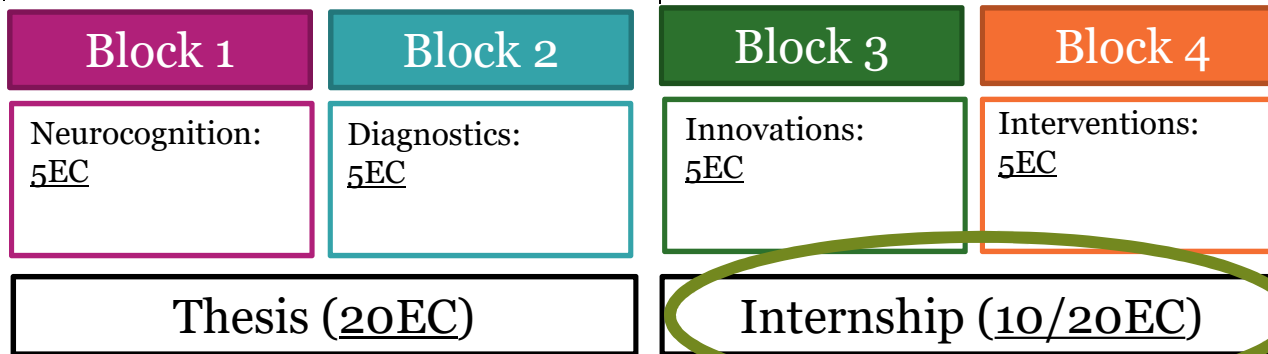
Content

1. General information master program
2. Thesis
3. Internship & BAPD

Program (60 ECTS)

September '20

February '21



Mandatory courses

(electives)

Internship coordinators

- Questions concerning finding an internship
- Approval of internship location
- Issues with your supervisor(s)

Ineke van der Ham
c.j.m.van.der.ham@fsw.leidenuniv.nl
071 527 6746; room 2B46



INTERNSHIP

- Gaining experience in the work field
- Professional skills in a practical or research area
- Connect (clinical) skills with scientific knowledge or research
- Supervision by professionals

3 Types of internships

- 20 ECTS Clinical internship
 - 560 hours (14 fulltime weeks)
 - Neuropsychological examination
 - Meeting NIP requirements
- 10 ECTS internship
 - 280 hours (7 fulltime weeks)
 - Clinical, research, ...
- Internal Practice Internship (10 ECTS)
 - Designed for international students

20 ECTS clinical internship

- 560 hours of clinical work
 - Diagnostics / Treatment
 - Learn to perform a neuropsychological examination
 - 75 hours of direct patient contact
- Supervision by GZ psychologist (or equivalent)
 - At least 1 hour per week
- University supervision: 5 group intervision meetings

10 ECTS internship

- 280 hours
 - Should be complemented with 10 ECTS of electives
- Clinical or research activities at a master level
- Individual university supervision

Internal Practical Internship HMP & CNP

What

- It is a 10 ECTS internship with a coaching/therapeutical focus
- Offers (international) students a first impression of the clinical work field
- It includes training, practice, reflection, reporting and it is concluded with an internship report

Who

- For students HMP or CNP (international students have precedence)
- No other internship can be done for your master

IPI

When

- It is an intensive trajectory between February and June 2021
- You have to realize it will mean a time investment of 2 - 2,5 days a week (and adjust your planning accordingly)
- More information about the trajectory:
verhoeven@fsw.leidenuniv.nl

Steps 10 / 20 ECTS Internship

1. Find a position
2. Sign contract
3. Submit workplan
4. Interim evaluation
5. Report
6. Final evaluation

(also see BlackBoard/Brightspace Clinical Neuropsychology)

Finding a position

- Start looking in time (hospitals, psychiatry, forensic institutes, specialized treatment centers (e.g. Autism Centre), nursing homes, rehabilitation centers)
 - Vacancies Blackboard, websites, open applications (contact by phone!)
 - List of previous internship organizations for available positions and/or inspiration
 - Check internship requirements
- **IMPORTANT:** Always request approval and inform coordinator when you have found a position

Sign contract

- University internship requirements should be met regarding:
 - Activities, supervision, evaluation
- Sign before starting internship
- Internship coordinator will assign you to a university supervisor
 - 20 ECTS Clinical: also intervision group meeting

Duration

- Some positions require more input than 10 (>280 hours)
or 20 ECTS (>560 hours)
 - Allowed, but not under university's responsibility or supervision
 - Arrange separate agreement with institution
 - Evaluation should occur after 280 or 560 hours
 - If needed, you can always contact the coordinator

Workplan

- Formulate learning objectives
 - Professionally, academically, personally
 - Input for evaluations
- Check with external and university supervisor
- Make changes during internship if necessary

Interim evaluation

- Halfway your intership (earlier is recommended)
- Fill in the assesment form (on BlackBoard/Brightspace)
- Ask for specific feedback, you are there to learn!
- If needed, university supervisor can intervene
- If progress has been insufficient – points of improvement and deadlines should be agreed upon

Internship Report

- See guidelines on BlackBoard/Brightspace
- Reflection on performance
- Clinical: case report with reflection
- Research: ‘research product’
 - Poster, proposal or part of scientific paper

Final evaluation

- Evaluation form external supervisor
- Report
- University supervisor provides grade
- 20 ECTS: attendance to 5 group (intervision) meetings

Online Q&A session for Thesis and Internship:

10 September 2020