

Brazil



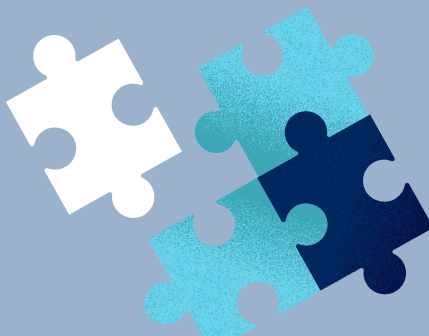
By involving the community in the activities of a palliative care center, it becomes a space for social participation that people visit as part of their everyday lives and where they can develop a sense of belonging.

The rapidly evolving social landscape of palliative care: how patients, families, and professionals shape the end of life



To obtain access to care, patients and families must **navigate between the public health care system, private health providers, and personal networks**, which become complementary in their care trajectory. This navigation requires substantial knowledge of medical conditions and systems.

Palliative care activism has been crucial to foster political support for palliative care in Brazil. Professionals from a wide range of disciplines have united, creating networks and sharing knowledge to increase its visibility and contributing to a shift in the cultural landscape of end-of-life care.



Research by Natashe Lemos Dekker



Universiteit
Leiden
The Netherlands



European Research Council
Established by the European Commission