



Universiteit
Leiden
Leiden University College
The Hague

LIVING @ AVB

Anna van Buerenplein

**HOUSING INFORMATION
LUC THE HAGUE
2025 -2026**



RESIDENTIAL CONCEPT

LUC has been located in its custom-built premises at the Anna van Buerenplein since 2013. The tower is located next to The Hague Central Station and the Royal Library. The building incorporates both teaching facilities and housing accommodation for nearly 400 first and second year students.

The first 4 floors are dedicated to academic and social life including class rooms, study areas, meeting areas, a community kitchen, a lounge, a roof terrace, a laundry room, a bike storage room, a soundproof room, a student-run bar and offices (for staff, faculty and students).

The top floors of the LUC building (floor 5 -21) provide accommodation for first and second year LUC students. Every first and second year student is required to live on campus. All residing students have their own studio apartment including private facilities (kitchen and bathroom).

In addition there is a common room on each floor where you can meet and hang out. It also enables students to study together, to socialise, and to work efficiently on group assignments. Floors are mixed in gender, nationality and in first and second year students to create a stimulating exchange of views, and to contribute to the enhancement of the LUC community.



Every floor has its own RA (Residential Assistant), a trained peer leader who supervises those living in a residence hall or housing facility. An RA has many roles and responsibilities, including building a residential community, being a familiar first resource for students and enforcing residence policies. The RAs are managed by and supervised by the Student Life Officer (SLO). The Student Life Officer is an academic faculty member of LUC and is in charge of all residential aspects of student life.



DUWO, specialist in student housing, is LUC's housing partner (www.duwo.nl). They are in charge of the housing contracts and the studio apartments. Rent agreements are for 2 full years once you begin your studies.

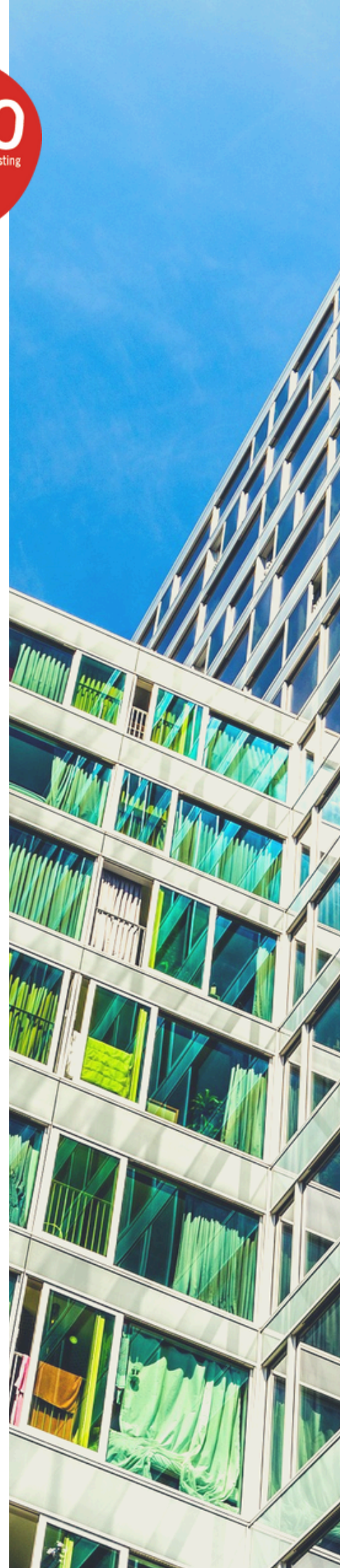
In early summer, DUWO will contact you regarding your housing contract. All of this will be arranged online, so make sure you monitor the email you provided when you applied to LUC. You will have to pay online for your contract costs, and first rental payment. Contracts need to be signed and paid before your move-in date, otherwise you will not be allowed to move into your studio apartment.

The total rent you pay to DUWO is the (basic) rent and the service costs added together. The basic rent is the amount you pay for the use of your room. The gross rent is a combination of the basic rent and service costs, such as the costs for gas, water and electricity. DUWO monthly rent prices, and one-time payments (cleaning, contract costs) are announced in May and are subject to yearly change.

As LUC students are renting a self-contained student room, they are eligible for rent benefit.

Rent benefit is a tax refund provided by the Dutch Government, to people who rent a room or a house but don't have a sufficient income. All apartments at LUC The Hague qualify for this subsidy.

Just like student finance and health insurance benefit, you can apply for rent benefit online on the [Belastingdienst website](#) using your DigiD account. As the entire application process is in Dutch, international students may want to find a Dutch friend who has already gone through the process to help them go through it. Remember to have your full housing contract (including rent and service costs) at hand when applying for rent benefit.



WHAT DO YOU GET? WHAT SHOULD YOU BRING?

All studio apartments are fully furnished including their own facilities.

The DUWO furnishing package contains:

- 1 bed, size 90x210 cm
- 1 mattress
- 1 flannel bed cover
- 2 small tables
- 1 wardrobe
- 1 book shelf
- 5 coat hangers
- 1 coat rack
- 1 desk
- 1 desk chair
- curtains
- 1 shower curtain
- 1 desk lamp
- 1 floor lamp
- 1 hot plate (for two pots)
- 1 fridge
- 1 waste bin
- 1 waste-paper basket
- 1 single-bed bedding (sheets, duvet and pillow)

However, there is also stuff that you need to bring yourself. You can think of:

- Cooking pans (induction)
- Pan coasters
- Table ware
- Cutlery
- Glasses & Mugs
- Cutting board, carving knife, serving spoon, spatula
- Mop
- Shower wiper (window wiper)
- Toilet set (brush and holder)
- Microfiber cloths and sponges
- Cleaning product for induction
- Etc.



WHAT DOES AN EMPTY ROOM LOOK LIKE?



WHAT DO STUDENTS MAKE OF IT....

