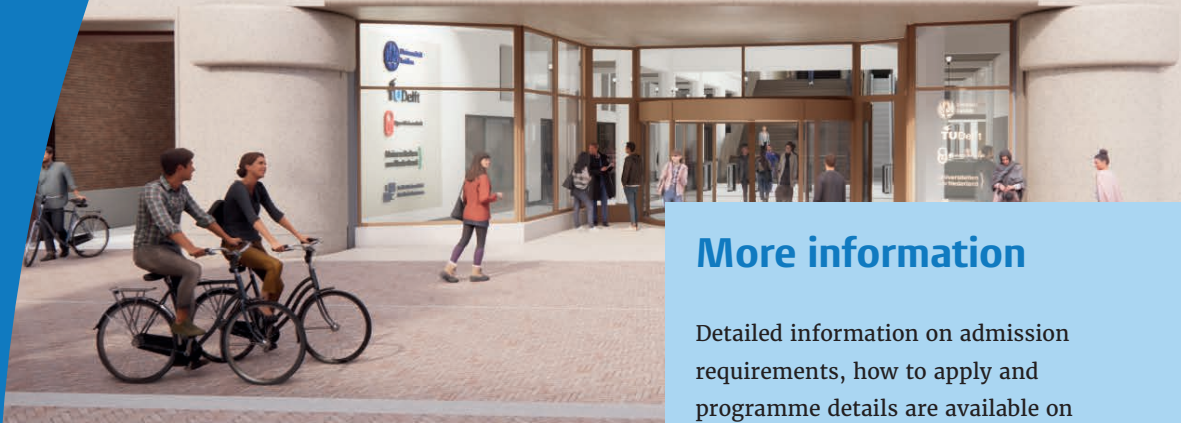


UNIVERSITEITSCAMPUS SPUI



More information

Detailed information on admission requirements, how to apply and programme details are available on the website:

universiteit.leiden.nl/phm

For further questions you can also mail to:

master.PHM@LUMC.nl



Studying within a broad health faculty

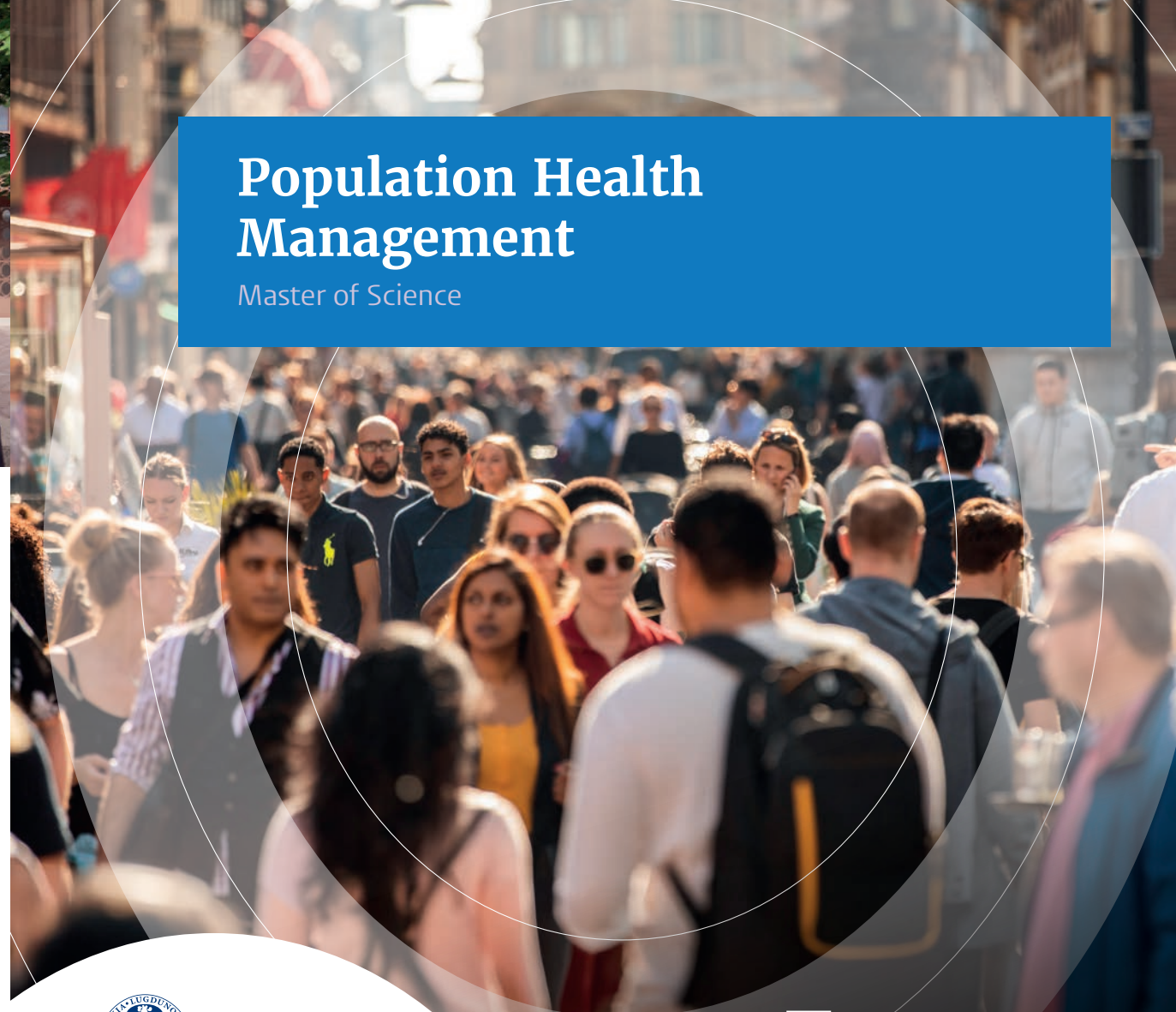
The master Population Health Management is part of the Faculty of Medicine of Leiden University and the Leiden University Medical Center (LUMC). The faculty educates you to become a health professional who truly makes a difference, especially now that healthcare is under pressure and health inequalities are increasing.

This requires expertise across multiple domains: from attention to patient care, prevention, research and innovation to ageing, social challenges, drug development,

technology and data. That is why our faculty offers a wide range of masters: Medicine, Biomedical Sciences, Health, Ageing and Society, Population Health Management, Technical Medicine, Pharmacy and Transfusion Medicine and Cellular and Tissue Therapies. This diversity allows you to broaden or deepen your study in line with your interests.

Population Health Management

Master of Science



Universiteit
Leiden
The Netherlands



Leids Universitair
Medisch Centrum

Master Population Health Management

Do you want to contribute to future proof health and care?

Our healthcare faces major challenges such as staff shortages, ageing and increasing costs. Population Health Management has emerged worldwide as a key strategy to address these issues. In this programme, you are trained to contribute to a sustainable and integrated healthcare system. You will learn to identify which populations are at the greatest risk of poor health. Design interventions tailored to their needs. And to reduce health disparities by reshaping the health and care system. This interdisciplinary master is especially suitable for you if you are interested in working in health and care and want to look beyond a career as a doctor or researcher. It makes for excellent career opportunities in consultancy, research, government or academia.



Practical information

Language:	English
Location:	The Hague
Duration:	2 years
Start date:	1 September or 1 February
Study format:	Fulltime
Number of students:	25
Average weekly contact hours:	20 Hybrid courses with 3 weeks online and 1 week on-campus
Application deadline:	1 april

6 reasons to choose Population Health Management in the Hague

Don't just take our word for it. Here's what our students say.

- Personal, small-scale programme with supportive and inspiring teachers
- Orientation weeks that connect theory to practice
- Career preparation built into the programme
- Learning alongside diverse and international peers
- On-campus weeks that build community
- Design your own programme for the second year



Faten, second year PHM student



“Through PHM, I gained strong research skills and learned to translate theory into real-world health projects. Courses like Syndemics and Health & Health Behaviour gave me practical tools to design rigorous research and contribute to system-level improvement. Designing a full study protocol during my internship was a highlight and confirmed how well the programme prepares you for practice.”

