

# Master Philosophy (120 EC)

Bruno Verbeek



**Universiteit  
Leiden**  
The Netherlands

# Welcome!

## [Dr. Bruno Verbeek](#)

Lecturer Ethics & Political Philosophy

Director of the Centre for Political Philosophy

Program Director MA Philosophy 120

Coordinator Specializations Law & Political Science



# ... and these are some of my colleagues



# Two programmes

- **One-year program: Philosophy 60 EC**
- *Four specialization tracks:*
  - History and Philosophy of the Sciences
  - Ethics and Politics
  - Philosophical Anthropology and Philosophy of Culture
  - Philosophical Perspectives on Politics and the Economy (3PE)
  
- **Two-year program: Philosophy 120 EC**
- *Five specialization tracks:*
  - Philosophy of Humanities
  - Philosophy of Law
  - Philosophy of Natural Sciences
  - Philosophy of Political Sciences
  - Philosophy of Psychology

# This presentation is about...

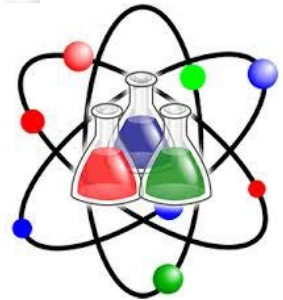
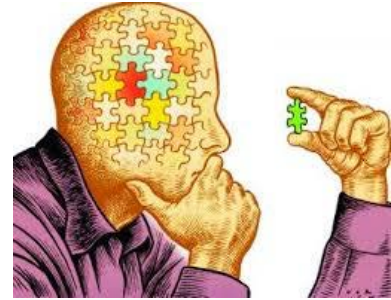
## Two-year program: Philosophy 120 EC

### *Five specialization tracks:*

- Philosophy of Humanities
- Philosophy of Law
- Philosophy of Natural Sciences
- Philosophy of Political Sciences
- Philosophy of Psychology

More information can be found online:

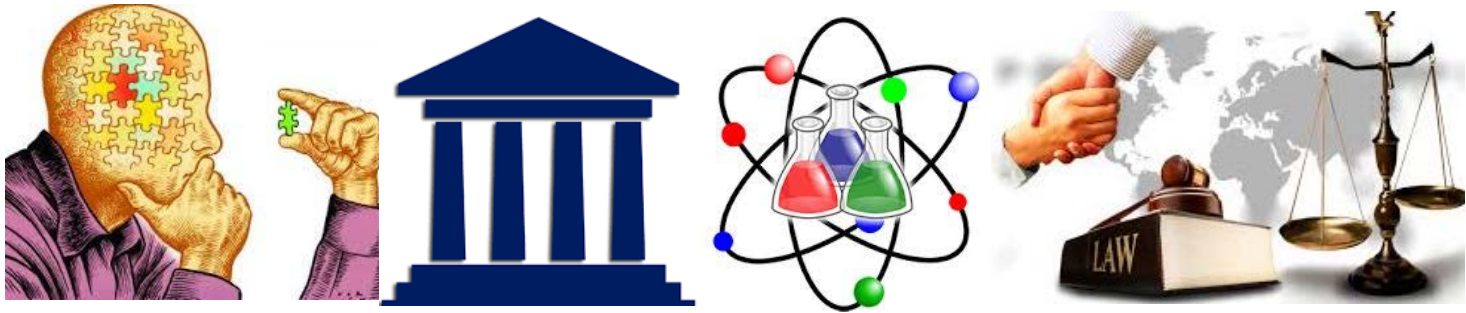
<https://www.universiteitleiden.nl/en/education/study-programmes/master/philosophy-120ecb>



# Warning...Two-year program: Philosophy 120 EC

*Starting 2020-2021 3 specialization tracks:*

- Philosophy of Humanities
- Philosophy of Law, Governance, and Politics
- Philosophy in World Traditions



# Admission requirements

- Bachelor's degree in a discipline relevant to the chosen Specialization
  - For example, Mathematics, History, Psychology, Law, etc.
- Sufficient knowledge of Philosophy
  - Bachelor's degree in Philosophy, or
  - Bachelor's degree that combines Philosophy with the chosen discipline, or Premaster programme in Philosophy (max. 60 EC)

More information: <https://www.universiteitleiden.nl/en/education/study-programmes/master/philosophy-120ec/admission-and-application>

# Admission requirements

- **Admission to a Master's programme in a discipline relevant to the chosen specialisation**
  - Notice that this is for the 'external' Admissions Board to decide!
- **Proficiency in English**
  - English IELTS 7.0
  - TOEFL 100 (internet-based)
  - Cambridge English Proficiency (CPE)
- **Philosophy Admissions Board**
  - Individual advice by Admissions Board
  - Premaster programmes
  - Conditional admissions
- Different requirements for "Leidse Combinatie"

For more admission information please see here: <https://www.universiteitleiden.nl/en/education/study-programmes/master/philosophy-120ec/admission-and-application>



# Program structure

<b>Year 1</b>	<b>Specialisation (10 EC)</b>
	<b>Phil. Elective (10 EC)</b>
	<b>40 EC of Master's courses in discipline of specialization</b>

<b>Year 2</b>	<b>Specialisation (10 EC)</b>
	<b>Phil. Elective (10 EC)</b>
	<b>Phil. Elective (10 EC)</b>
	<b>Phil. elective (10 EC)</b>
	<b>Thesis Seminar</b>
	<b>Master's Thesis (20 EC)</b>

# Program structure

80 EC in Philosophy, of which 40 EC in area of specialization

Year 1	Specialisation (10 EC)	Year 2	Specialisation (10 EC)
	Phil. elective (10 EC)		Phil. elective (10 EC)
	40 EC of Master's courses in discipline of specialisation		Phil. elective (10 EC)
			Phil. elective (10 EC)
			Thesis Seminar
			Master's Thesis (20 EC)

40 EC in discipline outside of Philosophy

# Program structure

<b>Year 1</b>	<b>Specialisation (10 EC)</b>	<b>Year 2</b>	<b>Specialisation (10 EC)</b>
	<b>Phil. elective (10 EC)</b>		<b>Phil. elective (10 EC)</b>
	<b>40 EC of Master's courses in discipline of specialisation</b>		<b>Phil. elective (10 EC)</b>
			<b>Phil. elective (10 EC)</b>
			<b>Thesis Seminar</b>
			<b>Master's Thesis (20 EC)</b>

Master's thesis in discipline  
of specialization (20 EC)

Most students do a double Master's degree by writing an extra  
thesis

# Program structure

One specialisation course  
per year

<b>Year 1</b>	<b>Specialisation (10 EC)</b>
	<b>Phil. elective (10 EC)</b>
	<b>40 EC of Master's courses in discipline of specialisation</b>

One specialisation course  
per year

<b>Year 2</b>	<b>Specialisation (10 EC)</b>
	<b>Phil. elective (10 EC)</b>
	<b>Phil. elective (10 EC)</b>
	<b>Phil. elective (10 EC)</b>
	<b>Thesis Seminar Master's Thesis (20 EC)</b>

# Program structure

Some specialisation courses 2018-2019

Year

Phil. elective (10 EC)

40 EC of Master's

courses in discipline of

Philosophy of Law  
The Authority of Law

Philosophy of Natural Sciences  
Space, Time and Causation

Some specialisation courses  
2018-2019

Year 2

Phil. elective (10 EC)

Phil. elective (10 EC)

Philosophy of Psychology  
Consciousness

Thesis Seminar

Philosophy of Humanities  
Philosophy of Play

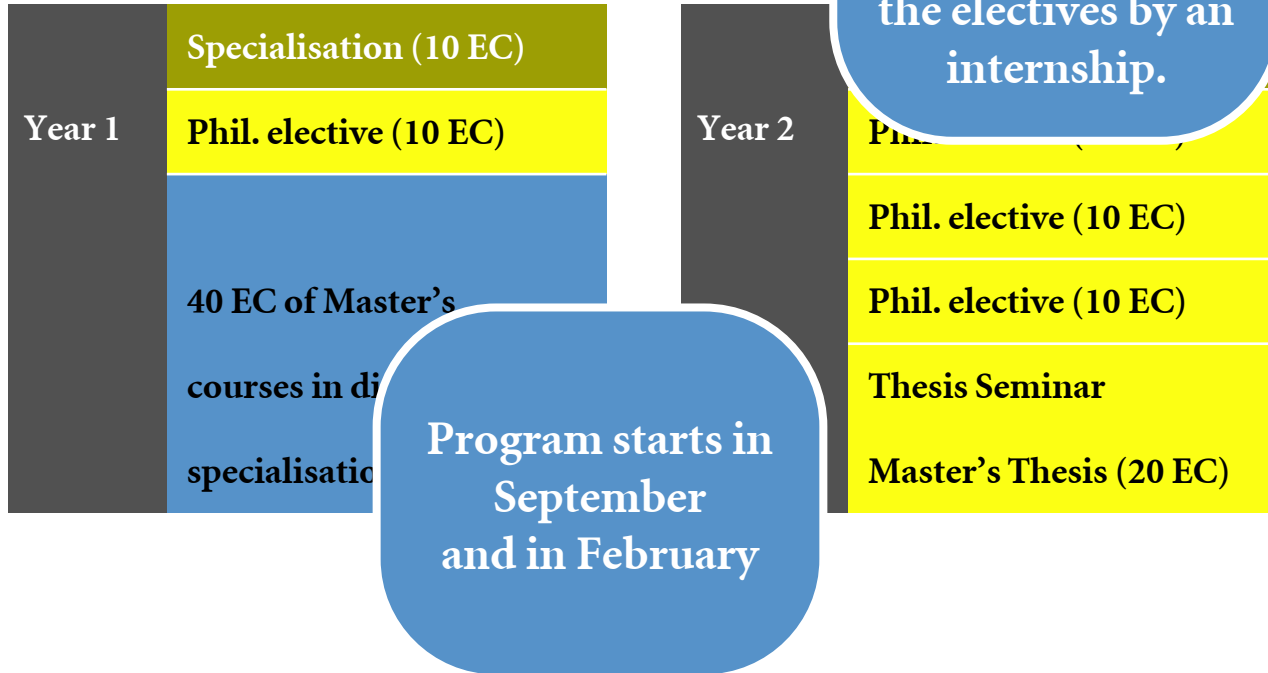
Philosophy of Political Science  
Political Judgment

# Program structure

Year 1	Specialisation (10 EC)	Year 2	Specialisation (10 EC)
	Phil. elective (10 EC)		Phil. elective (10 EC)
	40 EC of Master's courses in discipline of specialisation		Phil. elective (10 EC)
			Thesis Seminar
			Master's Thesis (20 EC)

Range of electives to choose from,  
master's programme Philosophy 60 EC

# Program structure



# Philosophy in Leiden

- ▶ **Mix of history and conceptual analysis**
- ▶ **Focus on global dynamics (belief systems, conflict, justice, etc.)**
- ▶ **International staff and students**
- ▶ **Excellent intellectual environment**
  - **Faculty of Humanities: 1st in Netherlands, 25th in the world (THE 2017 ranking)**
- ▶ **Leiden is the place to be!**
  - **Historical city center**
  - **World-class museums**
  - **Student life**
  - **Close to Amsterdam, The Hague**





# Knowledge & skills

- **Knowledge:**

- Knowledge of the broad field of philosophy
- Specific expertise in area of specialization
- Contextual view of several different domains
- Conceptual structure of different discourses

- **Skills:**

- Conceptual analysis
- Critical, independent and methodical thinking
- Excellent verbal and written communication skills
- Organisational skills
- Addressing complex issues – together with other students

# Life after Philosophy?

- ▶ **Policy officer for government or NGO**
- ▶ **Copywriter**
- ▶ **Journalist**
- ▶ **PhD candidate at international university**
- ▶ **Editor at communications consultancy firm**
- ▶ **IT consultant**
- ▶ **Coordinator at international human rights watch organisation**

In which branches do students work after their bachelor's and master's degree (%)?

Education	21
Research	14
Government	10
Communication	7
Culture, sports and recreation	7
Business services	5
Journalism	4
Consultancy	4
ICT	3
Industry	3
Health and welfare services	3
Other*	19

\* Including banks, publishers and non-profit organisations.

# Life after Philosophy?

## You match the profile if you:

- ▶ have a critical and open mind
- ▶ take pleasure in reading and writing
- ▶ have a good command of English
- ▶ like to process abstract ideas
- ▶ are highly disciplined
- ▶ like to work independently
- ▶ are prepared to challenge basic intuitions and assumptions
- ▶ are willing to give and process constructive feedback

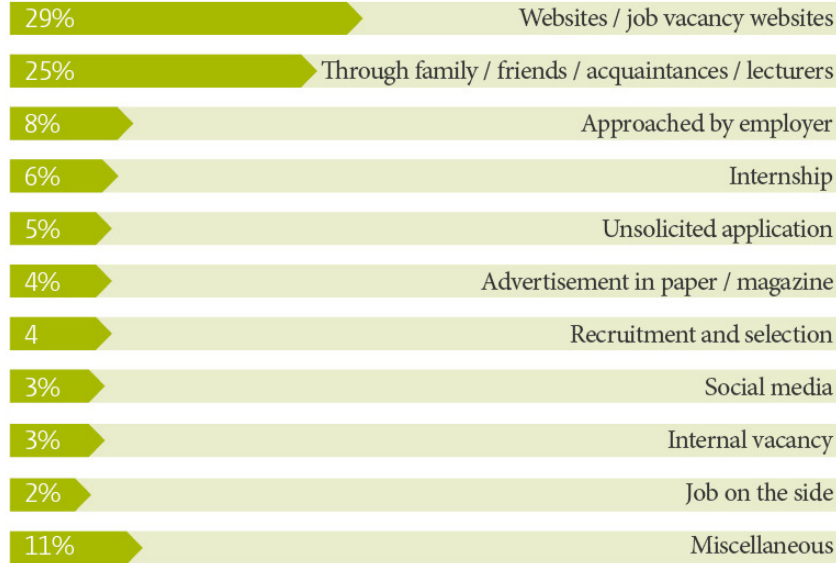
In which branches do students work after their bachelor's and master's degree (%)?

Education	21
Research	14
Government	10
Communication	7
Culture, sports and recreation	7
Business services	5
Journalism	4
Consultancy	4
ICT	3
Industry	3
Health and welfare services	3
Other*	19

\* Including banks, publishers and non-profit organisations.

# Future prospects

By which means did you obtain your current position?



**74%**

**find a job within 2 months**

**78%**

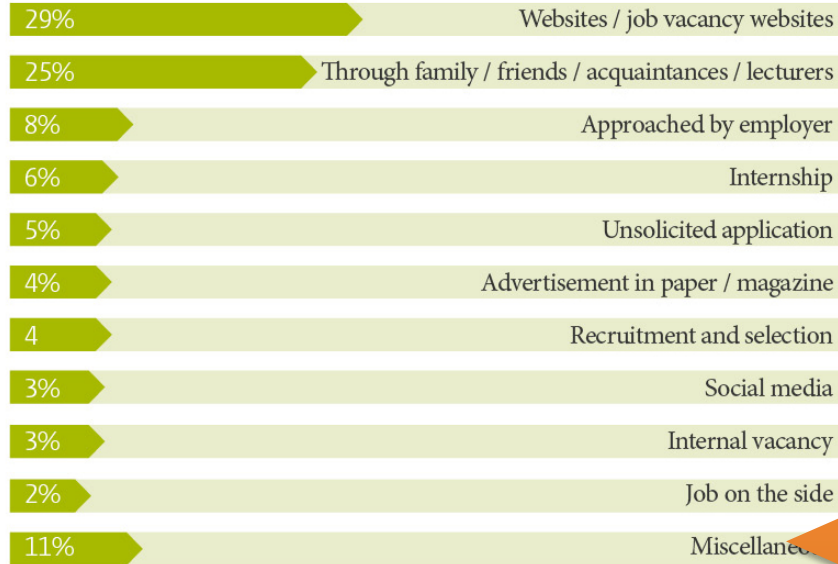
**immediately find a job at professional academic level**

**100%**

**find a job within a year**

# Future prospects

By which means did you obtain your current position?



**82%**

**find a job within 2 months**

**76%**

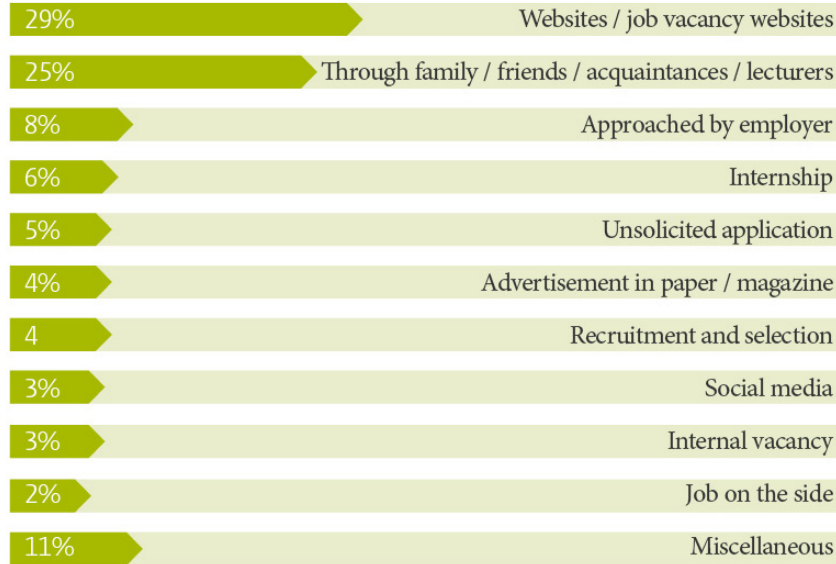
**immediately find a job at professional academic level**

**100%**

**find a job within a year at professional academic level**

# Future prospects

By which means did you obtain your current position?



**47%**

**find first job through personal network (family, friends, lecturers, etc.)**

**29%**

**find first job via regular vacancies**

**6%**

**are asked to continue to work at their internship location**

# We all look forward to meeting you!



**Apply Now!**

**Have you made your decision yet?!**

Start your application for the [MA Philosophy 120](#)

**Questions?**

For questions about the MA Philosophy,  
please get in touch with our study advisor:  
[stucowijsb@hum.leidenuniv.nl](mailto:stucowijsb@hum.leidenuniv.nl)





Thank you!



**Universiteit  
Leiden**  
The Netherlands