



# WASTE SEPARATION COMPOST



## Fruits and vegetables

Vegetable, fruit, and potato scraps are perfectly compostable. **Please don't put citrus peels in the compost, though.**



## Room plants and garden clippings

Dead room plants, garden clippings, flowers, cut grass.



## Coffee grinds and tea bags

Only put the tea bag in the compost if it is not made out of plastic.



## Food waste

**Only if it's not too greasy**, and only in small quantities. Please refrain from putting it on the compost if the compost is very wet.



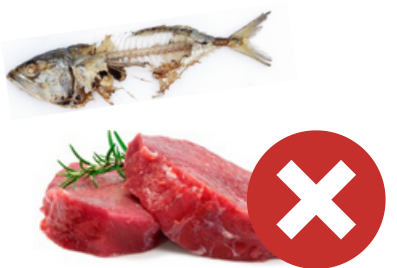
## No plastic bags, even 'biodegradable' ones

Small compost heaps aren't equipped to compost them.



## Citrus peels

Orange, mandarin, and lime peels have antifungal properties which means they compost too slowly. Please put them in the organic waste.



## No animal products

No (shell)fish, meat, eggs, cheese, or cheese rinds. Egg shells are fine, but please crush them first.



## No hairs, (bird cage) sand, or cat litter

These should be put in the residual waste.



## In doubt?

If you're in doubt, please don't put it on the compost.

