

Sustainability Implementation Agenda

2023-2026



Universiteit
Leiden
The Netherlands



Sustainable
campus



Working
together



Sustainability in
education and
research



Awareness and
involvement



FOREWORD



FOREWORD

Strengthen and accelerate sustainable movement



Climate change, globalisation, increasing social inequality, loss of biodiversity, economic and health crises: today's social problems are numerous and complex. They are rooted in ecologically unsustainable and socially unjust structures, cultures and practices. Internationally, solutions are increasingly being sought in a more sustainable world. Education in general and higher education in particular have a role to play in this. As UNESCO puts it, 'Sustainable development begins with education.'

As a university, we believe it is important to take our social responsibility seriously. Sustainability is therefore one of the five ongoing development themes in 'Innovating and Connecting', Leiden University's Strategic Plan for 2022-2027. At the heart of our Vision on Sustainability 2030 is that we work towards a sustainable work and study environment that inspires and mobilises people, both within and outside the university community, to realise a positive societal impact.

Armed with the knowledge derived from research and education, the university intends to play a leading role in the sustainability transition and contribute towards the achievement of the 17 Sustainable Development Goals of the United Nations. In terms of our own operational management, the university accepts its

responsibility by committing to the 2030 and 2050 goals set in the Climate Agreement and by working hard to reduce the environmental impact of the organisation.

The aim of this Sustainability Implementation Agenda for 2023-2026 is to achieve the Vision on Sustainability 2030. Students, staff and external partners are involved in the various phases of developing the implementation agenda. This agenda provides practical tools that we can use to make our education, research and operations more sustainable, so that, in turn, we can achieve our the ambitions we have set out for the future. We are committed to actions in which social, economic and environmental sustainability converge and reinforce each other. By doing so, we also want to empower and facilitate our staff and students to take sustainability into account in their individual decision-making.

The Executive Board,
Prof.mr. Annetje Ottow
Drs. Martijn Ridderbos RC
Prof.dr.ir. Hester Bijl

August, 2023



Sustainability in education and research

We offer all students the opportunity to learn about sustainability topics and issues in a way that is relevant to their studies. Students are trained to become academic professionals with the knowledge and skills needed to contribute to the sustainability transition.

Through our research, we aim to improve our understanding of global sustainability issues and develop knowledge that contributes to finding sustainable solutions. We combine diverse disciplines in coherent research programmes and stimulate research that reflects the multi- and interdisciplinary nature of the sustainability challenge. We maximise Leiden University's local impact by strengthening collaborations with societal partners and focusing on the practical application of knowledge on sustainability issues.



Goals:

Key activities:



- Improve understanding of global, national and regional sustainability issues
- Develop knowledge to find the right solutions

- Strengthen the sustainability research network
- Develop a policy on collaborations with the fossil industry
- Implementing the Laboratory Efficiency Assessment Framework



- Support lecturers in integrating sustainability in education
- Increase visibility of sustainable education

- Share best practices on the implementation of sustainable development in education
- Develop study materials on the integration of sustainability in education

Contributes to:

Ambitions Strategic Plan 'Innovating and Connecting'



Sustainable Development Goals





Sustainable campus

Leiden University is committed to creating green, sustainable campuses. Our Energy Transition Route Map is intended to lead to natural-gas-free buildings and a significant reduction (40%) in electricity consumption by 2050. We are also making efforts to become better adapted to climate change, strengthen biodiversity and reduce heat stress. We continue to actively pursue sustainable and circular business operations, including through our procurement policy, green catering, waste prevention and recycling and sustainable mobility.



- 65% reduction in Scope 1 and 2 CO₂ emissions by 2030 (compared to 1990)
- 25% reduction in natural gas by 2025 (compared to 2019)
- 25% reduction in CO₂ emissions generated by business travel by 2027

- Increase own energy production with 5,000 PV panels by 2025
- ‘Very good’ BREEAM-NL rating for New Construction and Renovation
- Further development of mandatory CO₂ offsetting for business travel by plane
- Maximum transparency on business travel



- Annual increase in green, biodiverse areas on campus and on/in university buildings

- Conduct a biodiversity inventory per campus
- Develop a biodiversity measurement system on each campus and identify the target species the university supports



- 25% reduction in annual waste per user by 2027 compared to 2019
- Increase weighting of sustainability criteria for procurement
- Increase the proportion of plant-based products
- High-quality processing of old ICT equipment

- Expand reporting on waste
- Establish policy plan on circular construction
- Phase out single-use packaging for butter, spreads and sauces
- Build knowledge about the environmental impact of ICT tendering procedures

More information:



[View the Energy Transition Route Map](#)

Contributes to:

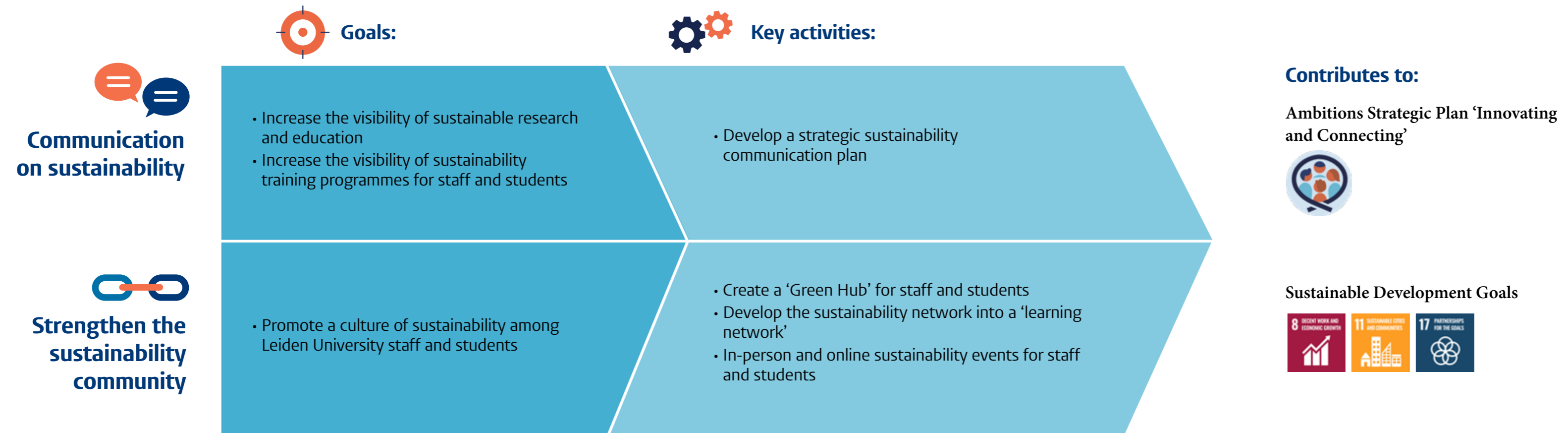
Sustainable Development Goals





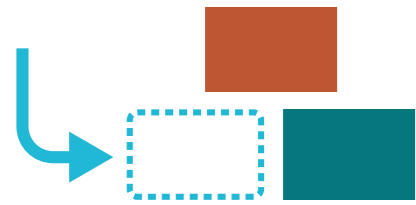
Awareness and involvement

Increasing the awareness and involvement of students and staff is crucial if we are going to make the university more sustainable. We therefore want to share our achievements in sustainability more intensively, and communicate more transparently about the responsibilities of campus users. We also intend to involve our regional partners in the transition.





Working together



Implementation

In terms of the university's operational management, Administration and Central Services, the Real Estate expertise centre and the University Services Department (UFB) take the lead in sustainability. The Strategic Communication and Marketing (SCM) directorate will be involved in achieving communication and visibility objectives. Since 2020, responsibility for the development and implementation of the Vision on Sustainability 2030 and this Implementation Agenda has been delegated to SAZ.

Faculties are encouraged to develop faculty sustainability policies for research, teaching and operations. This leaves sufficient scope to tailor the approach and work plan to the faculty's specific needs and situation.

For each faculty will be explored how it can strengthen the link between the university's vision on sustainability and the faculty's own sustainability policy – for example, by involving staff who are already engaged in sustainability as part of their role in sharing knowledge between faculties and promoting new initiatives.



Connection with social partners

European and national ambitions have a major impact on the transition to a future-proof and climate-neutral environment. European legislation and regulations with sustainable objectives have a direct impact on Leiden University's policy. Timely identification of European, national and regional policy developments regarding sustainability and interpreting their impact on Leiden University will be a priority during the implementation period.

By intensifying strategic collaborations with our public and private partners, we are building research and innovation ecosystems that support sustainable development. This includes identifying common ground in strategic agendas and opportunities for collaboration. By placing greater emphasis on campus development, we can contribute to regional ecosystems from every campus. To do this, we need to make choices in the coming years and prioritise the societal issues we want to focus on. Based on our broad profile, we need to decide which issues offer the best opportunities for collaboration and which issues we will focus on first. This is being addressed through the development of [Ambition 5](#), Action Lines 1 and 2 of the Strategic Plan.



Monitoring

We regularly monitor and report on our performance in relation to our objectives and the implementation of our core activities. This ensures that we identify and address issues and inform our internal and external stakeholders.

| TYPE | FREQUENCY | PURPOSE |
|--|-----------|--|
| Report to Operational Management meeting | Annually | Detailed update on implementation status of core activities and issues to Administration Directorate. |
| Sustainability report | Annually | Comprehensive update on performance and activities to a wide range of stakeholders including students, staff and the public. |
| SustainaBul ranking | Annually | Allows us to compare and evaluate our sustainability performance with other universities. |
| UI Green Metric ranking | Annually | Allows us to compare and evaluate our sustainability performance with other universities. |